

How to create a password protected folder in Ubuntu 14.04

NOVEMBER 16, 2015 BY BHAHTI — LEAVE A COMMENT

Do you want to hide or encrypt your personal folder?. Don't worry friends, you can easily password protect your folder in the Linux-based operating system. Here, for this purpose, we are using a software called Cryptkeeper.

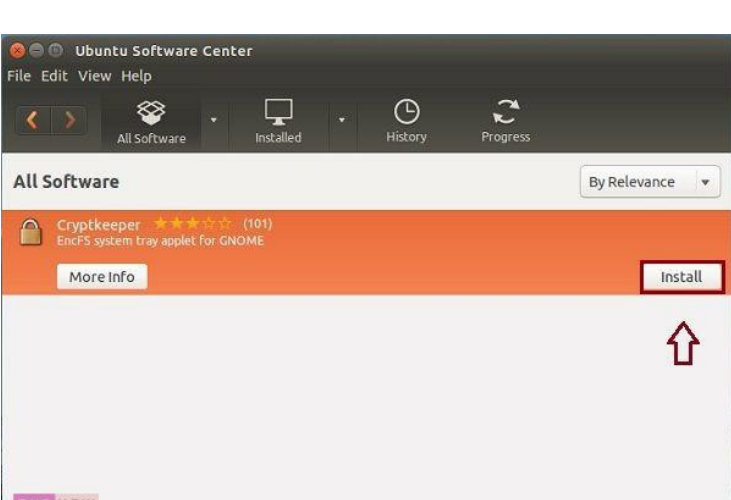
Basically, Cryptkeeper is used to protect your folder from unauthorized access by encrypting it with a password. You'll not be able to change the password as well as delete the encrypted folder unless you are using Cryptkeeper edit option. Just have a glance at this article to know about how to create a password protected folder in Ubuntu 14.04.

Steps to create a password protected folder:

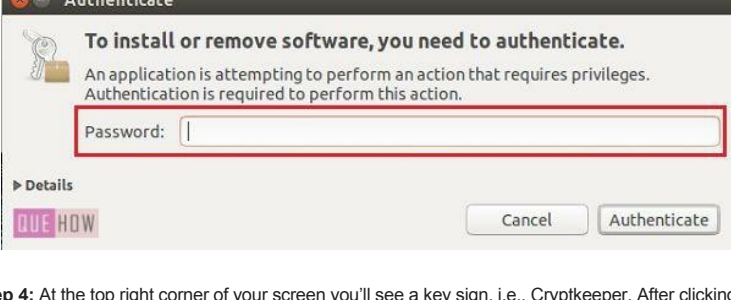
Step 1: First go to your unity dash and open "Ubuntu Software Center".



Step 2: Now, under 'Ubuntu Software Center' search bar, type "Cryptkeeper" and then click on Install button as shown in the image below.



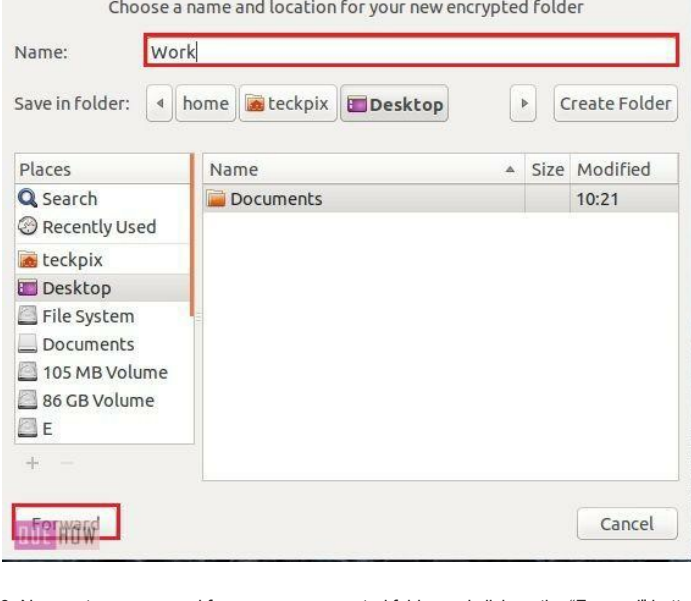
Step 3: You'll be prompted to provide your root password in order to install this software. Just type your password and click on "Authenticate" button.



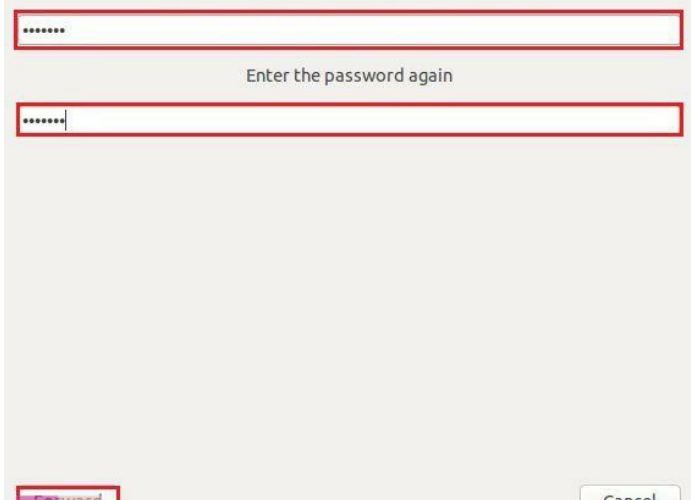
Step 4: At the top right corner of your screen you'll see a key sign, i.e., Cryptkeeper. After clicking on that icon you'll see different options, just click on "New encrypted folder".



Step 5: Under "Create a new encrypted directory" type the name of your folders, define your folder path and then click on the "Forward" button to continue further.



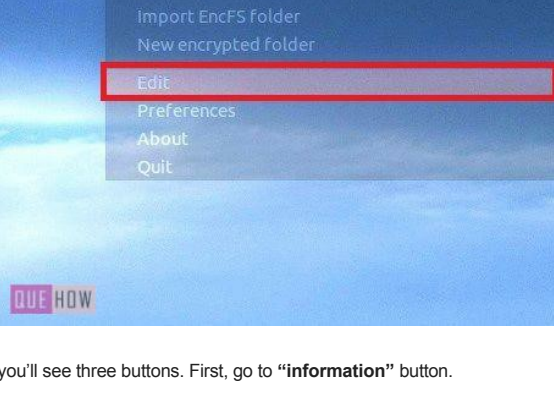
Step 6: Now, enter a password for your new encrypted folder and click on the "Forward" button to continue.



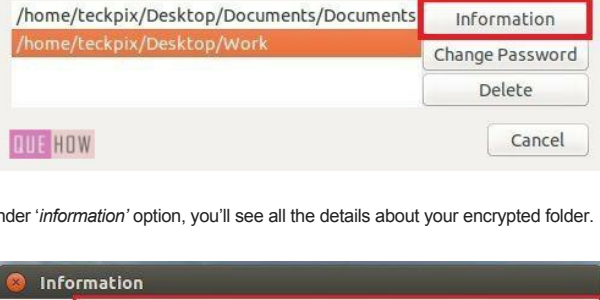
Step 7: You'll see a successful message as "The new encrypted folder has been successfully created", click "OK".



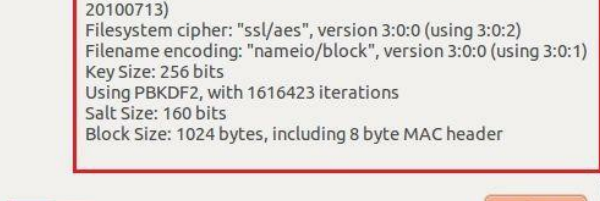
Step 8: You can also edit your encrypted folder, just go to the key icon and click on "Edit" option, as shown in the image below.



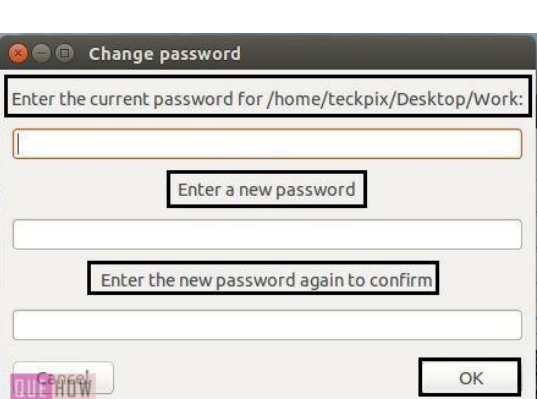
Step 9: Here, you'll see three buttons. First, go to "Information" button.



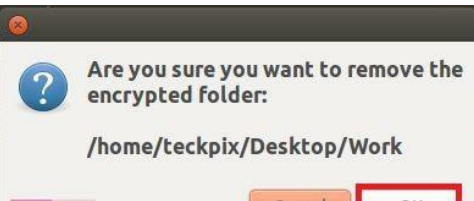
Step 10: Under 'information' option, you'll see all the details about your encrypted folder.



Step 11: In the same way "Change password" option will change your encrypted folder password.



Step 12: Finally "delete" option will remove your encrypted folder.



That's all friends, Keep reading.

You Might Also Like:

- How to Create a Password Protected PDF file
- How to Password Protect a Folder in Windows 10
- How to Password Protect a Folder in Windows 7
- How to open a folder using terminal in Ubuntu 14.04
- How to create a zip file using terminal in Ubuntu 14.04
- How to use 'tar' command to create archives in Ubuntu 14.04
- How to Create Desktop Icons in Ubuntu 14.04
- How to install software in Ubuntu 14.04

Filed Under: Linux

Leave a Reply

Your email address will not be published. Required fields are marked *

Comment

Name *

Email *

Website

I'm not a robot



Post Comment

Google Custom Search



MOST VIEWED

- How to Change a File Extension in Windows 10
- How to Kill a process in Windows 10
- How to Buy things from Flipkart
- How to Change Monitor Refresh Rate in Windows 10
- How to Enable and Configure Bluetooth in Ubuntu
- How to Create a Text File using Command Line in Ubuntu 14.04 (2 Methods)
- How to Create Non-editable (Read-Only) PDF file
- How to install IIS on Windows 10
- How to Unblock a Person (email address) on Gmail
- How to check RAM size and System type in Windows 10

RELATED SEARCHES

- How to install software in Ubuntu 14.04
- How to open a folder using terminal in Ubuntu 14.04
- How to Add or Remove programs in Ubuntu 14.04
- How to batch rename files in Ubuntu 14.04
- How to add windows look alike taskbar in Ubuntu 14.04

RECENT ADDITIONS

- How to Set Auto Reply in Outlook 2016?
- How to Add Contacts in Outlook 2016?
- How to Find Your Windows 10 Product Key?
- How to Track Changes in MS Powerpoint (PPT) 2016?
- How to add a hyperlink in MS Powerpoint (PPT) 2016?
- How to Track Changes in Ms Word 2016?
- How to convert MS PowerPoint (PPT) to video in office 2016?
- How to Add/Insert Sound in PowerPoint Presentation 2016
- How to Insert/Embed a Video in MS PowerPoint (PPT) 2016
- How to Insert a Watermark in MS PowerPoint (PPT)?